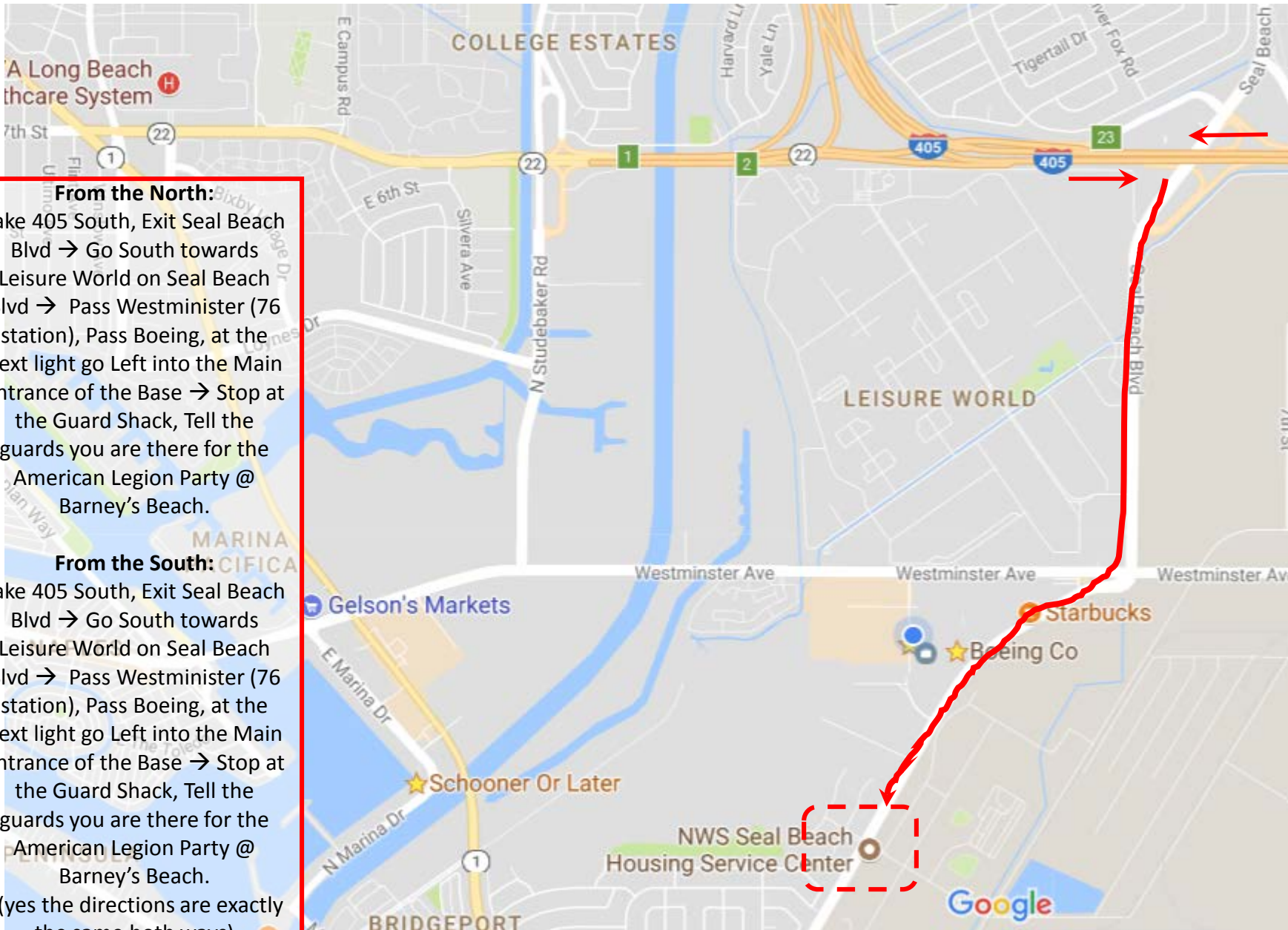
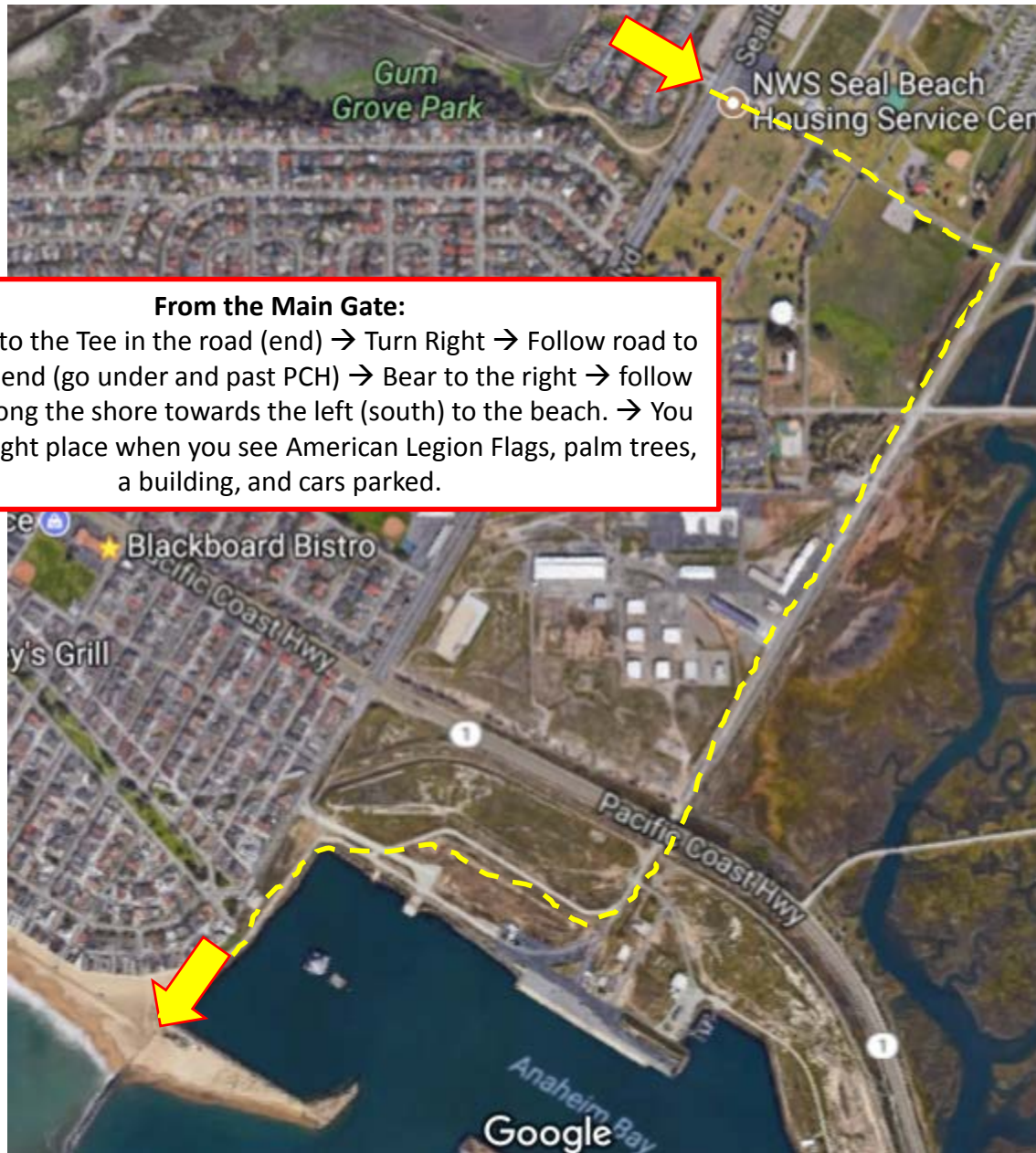


From the North:
Take 405 South, Exit Seal Beach Blvd → Go South towards Leisure World on Seal Beach Blvd → Pass Westminster (76 station), Pass Boeing, at the next light go Left into the Main Entrance of the Base → Stop at the Guard Shack, Tell the guards you are there for the American Legion Party @ Barney's Beach.

From the South:
Take 405 South, Exit Seal Beach Blvd → Go South towards Leisure World on Seal Beach Blvd → Pass Westminster (76 station), Pass Boeing, at the next light go Left into the Main Entrance of the Base → Stop at the Guard Shack, Tell the guards you are there for the American Legion Party @ Barney's Beach.

*(yes the directions are exactly the same both ways)





From the Main Gate:
Go straight to the Tee in the road (end) → Turn Right → Follow road to almost the end (go under and past PCH) → Bear to the right → follow the road along the shore towards the left (south) to the beach. → You are at the right place when you see American Legion Flags, palm trees, a building, and cars parked.



NWS Seal Beach
Housing Service Center



Google



Search

Seal Beach

Kitts Hwy

Kitts Hwy

Kitts Hwy

Pacific Coast Hwy

Signal Rd

Google



[Red dashed line] = Parking
[Yellow dashed line] = Party

Google